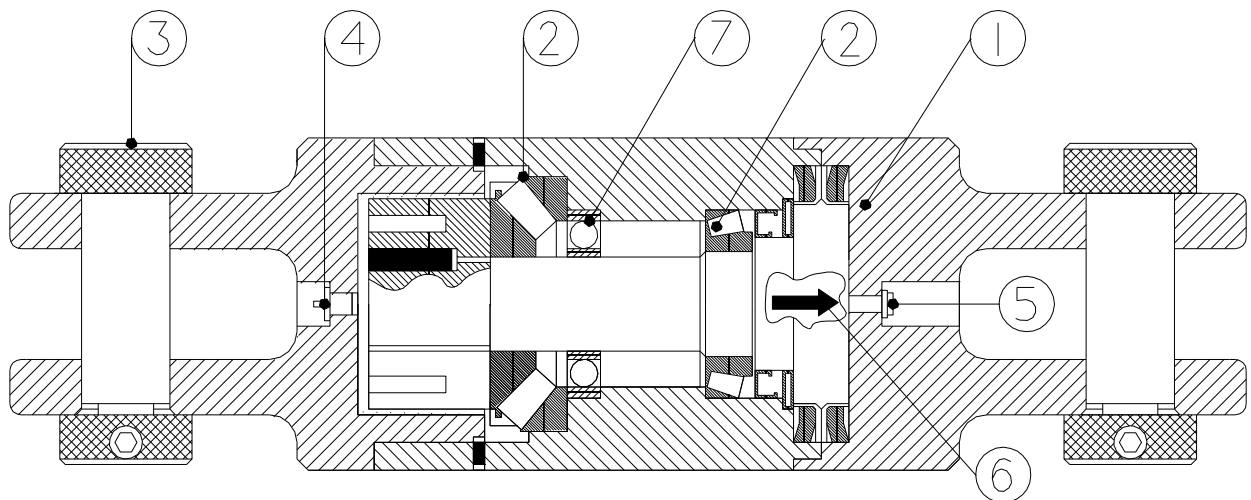


# HEAVY DUTY SWIVEL - DUB

These Pullback Swivels have been developed specifically for directional drilling applications. They are designed for prolonged use, under load, in an aggressive environment. The Swivel permits rotation of the drill pipe while protecting the utility from twisting. It is used to couple the reamer head to the utility being pulled back. Several end configurations and load capacities are available to handle any directional drilling application.



- |  |                         |
|--|-------------------------|
| 1. Multiple Stage Sealing System   | 4. Grease Nipple        |
| 2. Tapered Roller Bearing Design (Spherical Roller Bearing on 40 ton & 80 ton models only) | 6. Pull Direction Arrow |
| 3. Hardened Clevis Pins  |                         |
| 5. Pressure Relief Valve   |                         |
| 7. Radial Ball Bearing on 40 ton and 80 ton models   |                         |

## DESIGN FEATURES

The single most important feature of this patented product is the sealing systems. The multiple sealing stages become progressively finer so that an oil seal is not required to keep out sand and other coarse particles which can easily destroy a simple lip seal. This is done by using much sturdier seals designed for use in such applications as cement mixers or military tanks in desert conditions.

In addition to the sealing system, these swivels offer a lubrication system complete with relief valve so that the seals cannot be damaged by over greasing. Grease need only be applied in small quantities since loss of lubricant is almost non-existent.

The type of bearings used varies depending on swivel type and size. The Clevis-Box swivels utilise spherical, cylindrical and tapered roller bearings designed to provide an extra measure of side load capacity caused by the treaded or solid connection. The Clevis-Clevis swivels use back-to-back tapered roller bearings in the smaller sizes, but units 40 ton and above utilise the same spherical, cylindrical and tapered roller bearings as the Clevis-Box Swivels

## MAJOR FEATURES

- Specifically designed for Directional Drilling applications
- Extensive size range from 2.5 to 250 Ton
- Multiple Stage Sealing System
- Clevis and/or Box connections available with hardened lockable Clevis Pins
- Factor of safety on body of at least 5
- Compact Size

Continued Overleaf

The company follow a policy of continuous product development and as such reserves the right to make alterations to equipment and techniques without prior notice.

## PIPE EQUIPMENT SPECIALISTS LTD

66 DUKESWAY, TEESIDE INDUSTRIAL ESTATE, THORNABY, STOCKTON-ON-TEES, TS17 9LT, ENGLAND

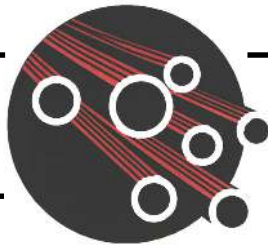
**TEL: +44 (0) 1642 769789 FAX: +44 (0) 1642 769456**

**www.pipe-equipment.co.uk Email: info@pipe-equipment.co.uk**

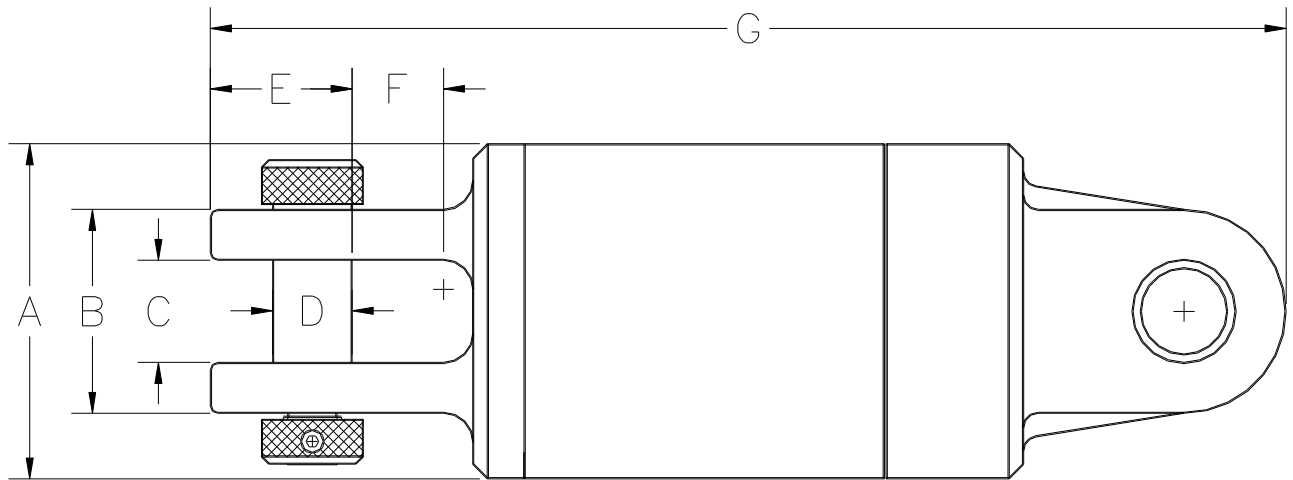


Certificate Number: 1253

WP/TIS/HDDS/800F



# HEAVY DUTY SWIVEL - DUB



Part Number	Safe Working Limit	Ultimate Load	A	B	C	D	E	F	G	Net Weight
6550023	5,000 lb 2.5 Tons	25,000 lb 111 kN	2" 51 mm	2" 51 mm	1" 25 mm	11/16" 17 mm	1-3/16" 30 mm	13/16" 21 mm	7-1/2" 190 mm	3.8 lb 1.7 kg
6550045	10,000 lb 5 Tons	50,000 lb 222 kN	3-1/8" 80 mm	2-1/4" 57 mm	1-1/4" 32 mm	3/4" 19 mm	1-5/16" 33 mm	7/8" 22 mm	11-1/2" 290 mm	15 lb 6.8 kg
6550091	20,000 lb 10 Tons	100,000 lb 445 kN	3-3/4" 95 mm	2-3/4" 70 mm	1-1/2" 38 mm	1" 25 mm	1-5/8" 41 mm	15/16" 24 mm	13-5/8" 350 mm	27 lb 12 kg
6550136	30,000 lb 15 Tons	150,000 lb 667 kN	4-3/4" 121 mm	3-1/4" 83 mm	1-3/4" 44 mm	1-1/8" 29 mm	2-1/16" 52 mm	1-7/16" 36 mm	18" 460 mm	57 lb 26 kg
6550182	40,000 lb 20 Tons	200,000 lb 890 kN	5-3/4" 146 mm	3-1/2" 89 mm	1-3/4" 44 mm	1-3/8" 35 mm	2-1/2" 63 mm	1-7/16" 36 mm	18-1/2" 470 mm	83 lb 38 kg
6550273	60,000 lb 30 Tons	300,000 lb 1330 kN	6" 152 mm	3-1/2" 89 mm	1-3/4" 44 mm	1-3/8" 35 mm	2-1/2" 63 mm	1-7/16" 36 mm	18-1/2" 470 mm	85 lb 39 kg
6550364	80,000 lb 40 Tons	400,000 lb 1780 kN	6-1/2" 165 mm	4-5/8" 117 mm	2-1/8" 54 mm	1-3/4" 44 mm	3-5/16" 84 mm	1-7/8" 48 mm	24-1/2" 620 mm	150 lb 68 kg
6550545	120,000 lb 60 Tons	600,000 lb 2670 kN	7-1/2" 190 mm	5-1/2" 140 mm	2-3/4" 70 mm	2-1/8" 54 mm	3-5/8" 92 mm	2-5/8" 67 mm	29" 740 mm	250 lb 113 kg
6550727	160,000 lb 80 Tons	800,000 lb 3560 kN	9" 229 mm	6" 152 mm	3-1/4" 83 mm	2-1/2" 63 mm	4-13/16" 122 mm	2-3/4" 70 mm	33-1/2" 850 mm	380 lb 172 kg

The **Safe Working Limit** is calculated using a 5:1 safety factor based on the ultimate load. The **Ultimate Load** is the tensile loading required to separate the DUB-Swivel® into two or more parts.

It is our recommendation to always select a swivel larger than the machine capacity. This may cost a little more, but when this is done and the product used carefully, lifespans in excess of 3000 hours have been recorded.

The company follows a policy of continuous product development and as such reserves the right to make alterations to equipment and techniques without prior notice.

## PIPE EQUIPMENT SPECIALISTS LTD

66 DUKESWAY, TEESIDE INDUSTRIAL ESTATE, THORNABY, STOCKTON-ON-TEES, TS17 9LT, ENGLAND

TEL: +44 (0) 1642 769789 FAX: +44 (0) 1642 769456

www.pipe-equipment.co.uk Email: info@pipe-equipment.co.uk



Certificate Number: 1253

WP/TIS/HDDS/800F