

INSERTION TRUMPETS



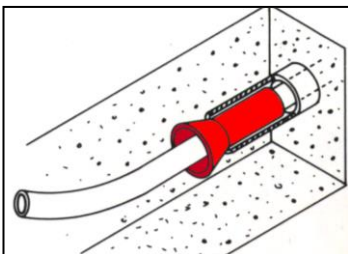
The Pipe Equipment range of Insertion Trumpets has been specially developed to eliminate the possibility of damage to PE pipes caused by the cut edge of the existing metal pipe during a dead insertion or slip lining operation.

Insertion Trumpets have sufficient length to protect the PE pipe, even when the carrier main is 'smashed out' cast iron. They are manufactured from polyethylene, PVC or fibreglass (depending on size) and are available in standard sizes to suit metal pipes from $\frac{3}{4}$ " to 18".

Use of an Insertion Trumpet ensures that both British Gas and Water Research Council codes of practice are adhered to.

MODE OF OPERATION

The correct size of Insertion Trumpet is selected for the carrier main. This is then inserted into the existing main up to the trumpet shaped end prior to the PE insertion.



Once the PE is installed the Insertion Trumpet can be either removed or, for added security left in-situ to protect the PE from further damage from the metal pipe edge.

MAJOR FEATURES

- Simple to use.
- Lightweight.
- Permanent or reusable.
- Suitable for close fit insertion
 - Roll Down and Swaged pipe.
- Range of sizes from $\frac{3}{4}$ " (16mm PE) to 18" (400mm PE).
- Larger sizes available upon request.
- Ensures conformance with British Gas and Water Council codes of practice.

The company follow a policy of continuous product development and as such reserves the right to make alterations to equipment and techniques without prior notice.

PIPE EQUIPMENT SPECIALISTS LTD

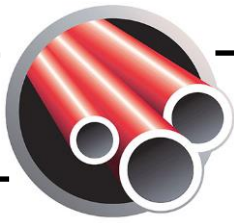
66 DUKESWAY, TEESIDE INDUSTRIAL ESTATE, THORNABY, STOCKTON-ON-TEES, TS17 9LT, ENGLAND

TEL: +44 (0) 1642 769789 FAX: +44 (0) 1642 769456

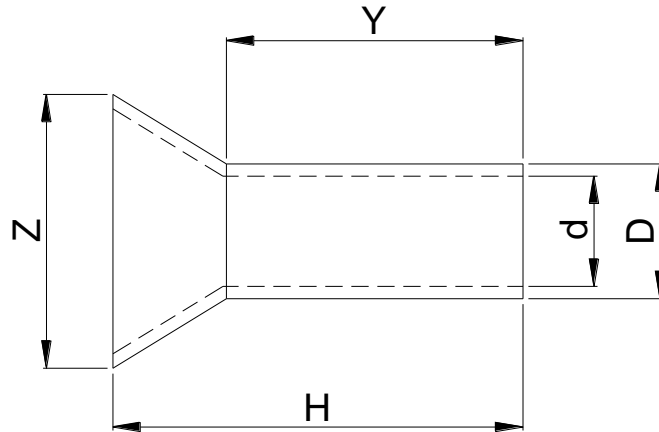
www.pipe-equipment.co.uk Email: info@pipe-equipment.co.uk



ISO 9001, 14001, 45001



INSERTION TRUMPETS



PART No	SIZE	d (mm)	D (mm)	Y (mm)	H (mm)	Z (mm)	MATERIAL
396019	¾"	18	20	40	42	29	L.D. Polyethylene
396025	1"	21	23	50	52	35	L.D. Polyethylene
396032	1¼"	28	29	61	66	44	L.D. Polyethylene
396038	1½"	34	37	74	84	56	L.D. Polyethylene
396051	2"	42	47	100	109	70	L.D. Polyethylene
023003	3"	69	75	422	445	113	PVC
023004	4"	94	100	415	445	147	PVC
023006	6"	134	140	420	445	187	PVC
023008	8"	192	200	420	450	245	PVC
023010	10"	244	255	280	360	350	Nylon
023012	12"	299	305	283	358	398	Nylon
023014	14"	319	352	283	357	448	Nylon
023018	18"	451	454	446	625	598	Nylon

NOTE: - ALL SIZES ARE APPROXIMATE

The company follow a policy of continuous product development and as such reserves the right to make alterations to equipment and techniques without prior notice.

PIPE EQUIPMENT SPECIALISTS LTD

66 DUKESWAY, TEESIDE INDUSTRIAL ESTATE, THORNABY, STOCKTON-ON-TEES, TS17 9LT, ENGLAND

TEL: +44 (0) 1642 769789 FAX: +44 (0) 1642 769456

www.pipe-equipment.co.uk Email: info@pipe-equipment.co.uk



ISO 9001, 14001, 45001